

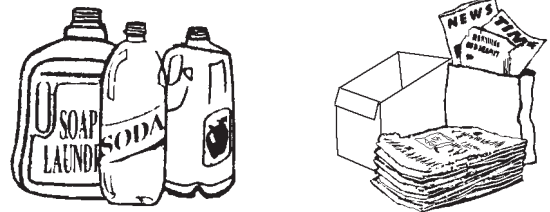
2016 CURBSIDE RECYCLING FOR WOBURN

WHAT CAN BE RECYCLED?

- ▲ Chipboard (cereal boxes, shoeboxes, etc.)
- ▲ Newspapers/Inserts
- ▲ Magazines/Catalogs/Phone Books
- ▲ Office Paper/Junk Mail/Brown Bags
- ▲ Flattened Corrugated Cardboard Up To 30" x 30"
- ▲ Glass Bottles and Jars
- ▲ Aluminum and Steel (Tin) Food And Beverage Cans
- ▲ Plastic Bottles and Jars Marked ♻️ Thru ♻️
- ▲ Milk and Juice Cartons and Juice Boxes
- ▲ **NO** Broken Glass, Light Bulbs, Window, Dishes, or Pyrex
- ▲ **NO** Paint or Aerosol Cans, Motor Oil Containers
- ▲ **NO** Grocery bags or Styrofoam
- ▲ **NO** Construction Debris

HOW TO RECYCLE:

Woburn offers single stream recycling. You do not have to separate. All your recyclables can be placed in one recycling container.



Residents may use any container for recycling as long as it is clearly labeled "RECYCLE". Recycling stickers (optional) are available at the Woburn Board of Health. The Board of Health does **NOT** provide recycling or trash containers.

TRASH, RECYCLING & YARD WASTE MUST BE OUT CURBSIDE BY 7AM ON YOUR TRASH DAY.
Construction Debris of any kind is not allowed!



▲ Christmas Trees will be picked up Dec. 28, 2016 thru Jan. 2, 2017 and Jan. 4 thru Jan. 6, 2017 on trash day. Please ensure it is not buried under snow or ice. **NO BAGS AND NO DECORATIONS.**



▲ Call Waste Management for appliance and CRT screens pickup by 3 pm Thursday at 781-933-2113 to schedule Friday pick up. (note: residents are not required to use Waste Management for appliances and CRT screens pick-up)

- Appliances**
(stoves, washers, dryers, etc.) \$15 each
- Freon Bearing Appliances**
(refrigerators-doors must be removed, ac, etc.) \$25 each
- TV/Computer Monitors** \$35 each

▲ **COLLECTION SCHEDULE**
 Recycling containers are collected **EVERY OTHER WEEK** on regular trash collection day. Neighborhoods have been assigned white or orange weeks to help clarify when recyclables will be collected. For information concerning your trash or recycling schedule, contact the Board of Health at 781-897-5920.

2016 YARD WASTE COLLECTION (on your regular trash day).

Apr. 19 - 23	Jul. 18 - 22	Oct. 17 - 21
May 16 - 20	Aug. 15 - 19	Oct. 31 - Nov. 4
June 20 - 24	Sept. 19 - 23	Nov. 14 - 18
		Nov. 28 - Dec. 2



Use yard waste bags or barrels without lids. **NO PLASTIC BAGS.** Cut branches to 3 feet in length, no larger than 2 inches in diameter, bundle & tie.

HOLIDAY SCHEDULE

If a collection day falls on a holiday, that day's collection and remaining collections for the week are delayed one day. **HOLIDAYS ARE CIRCLED.**

MISSED COLLECTIONS

If your recyclables, trash or yard waste has not been picked up, call Waste Management at 781-933-2113 within 24 hours.

2016 BIN COLLECTION

WHITE WEEK

ORANGE WEEK

○ OBSERVED HOLIDAYS

JANUARY 2016						
Su	Mo	Tu	We	Th	Fr	Sa
					①	2
3	4	5	6	7	8	9
10	11	12	13	14	15	16
17	18	19	20	21	22	23
24	25	26	27	28	29	30
31						

FEBRUARY 2016						
Su	Mo	Tu	We	Th	Fr	Sa
	1	2	3	4	5	6
7	8	9	10	11	12	13
14	15	16	17	18	19	20
21	22	23	24	25	26	27
28	29					

MARCH 2016						
Su	Mo	Tu	We	Th	Fr	Sa
		1	2	3	4	5
6	7	8	9	10	11	12
13	14	15	16	17	18	19
20	21	22	23	24	25	26
27	28	29	30	31		

APRIL 2016						
Su	Mo	Tu	We	Th	Fr	Sa
					1	2
3	4	5	6	7	8	9
10	11	12	13	14	15	16
17	18	19	20	21	22	23
24	25	26	27	28	29	30

MAY 2016						
Su	Mo	Tu	We	Th	Fr	Sa
1	2	3	4	5	6	7
8	9	10	11	12	13	14
15	16	17	18	19	20	21
22	23	24	25	26	27	28
29	30					

JUNE 2016						
Su	Mo	Tu	We	Th	Fr	Sa
				1	2	3
			4	5	6	7
8	9	10	11	12	13	14
15	16	17	18	19	20	21
22	23	24	25	26	27	28
29	30					

JULY 2016						
Su	Mo	Tu	We	Th	Fr	Sa
					1	2
3	4	5	6	7	8	9
10	11	12	13	14	15	16
17	18	19	20	21	22	23
24	25	26	27	28	29	30
31						

AUGUST 2016						
Su	Mo	Tu	We	Th	Fr	Sa
	1	2	3	4	5	6
7	8	9	10	11	12	13
14	15	16	17	18	19	20
21	22	23	24	25	26	27
28	29	30	31			

SEPTEMBER 2016						
Su	Mo	Tu	We	Th	Fr	Sa
				1	2	3
4	5	6	7	8	9	10
11	12	13	14	15	16	17
18	19	20	21	22	23	24
25	26	27	28	29	30	

OCTOBER 2016						
Su	Mo	Tu	We	Th	Fr	Sa
						1
2	3	4	5	6	7	8
9	10	11	12	13	14	15
16	17	18	19	20	21	22
23	24	25	26	27	28	29
30	31					

NOVEMBER 2016						
Su	Mo	Tu	We	Th	Fr	Sa
	1	2	3	4	5	
6	7	8	9	10	11	12
13	14	15	16	17	18	19
20	21	22	23	24	25	26
27	28	29	30			

DECEMBER 2016						
Su	Mo	Tu	We	Th	Fr	Sa
					1	2
					3	
4	5	6	7	8	9	10
11	12	13	14	15	16	17
18	19	20	21	22	23	24
25	26	27	28	29	30	31

*Please note Mon. Dec. 26, 2016 and Mon. Jan. 2, 2017 will be an observed holiday for trash and recycling pickup

RECYCLING INFORMATION CITY OF WOBURN

Dear Woburn Resident,

Thank you for your efforts and cooperation. Participation in Woburn's curbside recycling program by all residents living in 1-3 unit homes, condominiums and townhouses will help our community divert many tons of trash from our waste stream annually for reuse in new products.

On the reverse side you will find a recycling reference chart and collection calendar for you to post in a convenient location.

REMEMBER...

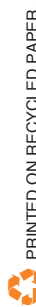
- ▶ Rinse all containers clean.
- ▶ For recycling stickers to place on your container, please call 781-897-5920.
- ▶ Woburn encourages home composting of yard waste.
- ▶ No construction debris. (doors, windows, sheetrock, 2x4s, etc.)

ITEMS PERMITTED IN REGULAR TRASH:

- ▶ Regular household trash
- ▶ Carpet (cut to 3', rolled and tied)
- ▶ Only one room's worth of carpet allowed each week.
- ▶ Bulk Item (i.e. furniture) - one allowed per week

Household hazardous waste **CANNOT** be put in with trash.
Example: Liquid Paint, Paint Thinners, Pool Chemicals, Wood Stains, Varnishes, etc.

Call the Woburn Board of Health for disposal instructions,
781-897-5920 or visit the Board of Health Website at
www.cityofwoburn.com under public safety.



Woburn Board of Health
10 Common Street
Woburn, MA 01801
781-897-5920

Presorted Standard
US POSTAGE
PAID
BILLERICA, MA
Permit #3

2016

Please Keep
for Reference

Trash & Recycling Calendar "2016"

ADDITIONAL RECYCLING INFORMATION



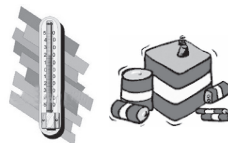
RESIDENTIAL WASTE OIL

Where: Murphy's Waste Oil
252 Salem Street
Woburn, MA 01801
Time: 1st Saturday of the month
8 a.m. to 12 noon (except
when holiday falls on a
weekend.)
Accept waste oil, oil filter,
and anti-freeze



CAR TIRES/BATTERIES

Where: City Hall Parking lot
Time: 3rd Saturday of March,
June and September.
8 a.m. to 12 noon
Tires on or off rims \$1.00 ea.
Automotive batteries \$1.00 ea.
Service provided by
Holland Used Auto Parts.



MERCURY BEARING WASTES

Where: City Hall Parking lot
Time: 3rd Sat. of March, June and
Sept. 8 a.m. to 12 noon
fluorescent lighting,
thermometers, thermostats,
and button batteries.
Alkaline batteries can go out with regular
trash. All recyclable batteries are accepted at
BatteriesPlus at 173A Cambridge Rd.



PROPANE TANKS

Where: Xpress Fuel
505 Main Street
Woburn, MA 01801
Time: M-F: 6:00 a.m. - 10:00 p.m.
Sat.: 7:00 a.m. - 10:00 p.m.
Sun: 8:00 a.m. - 8:00 p.m.
\$5.00 per tank

Illegal Dumping

If you see any illegal dumping or other environmental hazards occurring in your neighborhood, **please call your local Board of Health** or the DEP Environmental Strike Force at 617-556-1000.

REMEMBER, YOU HAVEN'T TRULY RECYCLED UNTIL...

you buy products made from materials you place at the curbside or drop-off. For more information on recycling in the City of Woburn call: 781-897-5920 or go to our website @ www.cityofwoburn.com