

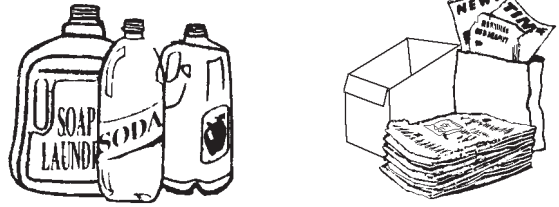
# 2018 CURBSIDE RECYCLING FOR WOBURN

## WHAT CAN BE RECYCLED?

- ▲ Chipboard (cereal boxes, shoeboxes, etc.)
- ▲ Newspapers/Inserts
- ▲ Magazines/Catalogs/Phone Books
- ▲ Office Paper/Junk Mail/Brown Bags
- ▲ Flattened Corrugated Cardboard Up To 30" x 30"
- ▲ Glass Bottles and Jars
- ▲ Aluminum and Steel (Tin) Food And Beverage Cans
- ▲ Plastic Bottles and Jars Marked ♻️ Thru ♻️
- ▲ Milk and Juice Cartons and Juice Boxes
- ▲ **NO** Broken Glass, Light Bulbs, Window, Dishes, or Pyrex
- ▲ **NO** Paint or Aerosol Cans, Motor Oil Containers
- ▲ **NO** Grocery bags or Styrofoam
- ▲ **NO** Construction Debris

## HOW TO RECYCLE:

Woburn offers single stream recycling. You do not have to separate. All your recyclables can be placed in one recycling container.



Residents may use any solid reusable container as long as it is clearly labeled "RECYCLE". **PLASTIC BAGS** of any type are prohibited from being used for recycling purposes. Recycling stickers (optional) are available at the Woburn Board of Health. The Board of Health does **NOT** provide recycling or trash containers.

**TRASH, RECYCLING & YARD WASTE MUST BE OUT CURBSIDE BY 7AM ON YOUR TRASH DAY.**  
**Construction Debris of any kind is not allowed!**



- ▲ Christmas Trees will be picked up on Mon. Dec. 31, 2018, Wed. Jan. 2, thru Sat. Jan. 5, & Mon. Jan. 7 thru Fri. Jan. 11, 2019. Please ensure it is not buried under snow or ice. **NO BAGS AND NO DECORATIONS.**



- ▲ Call Waste Management for appliance and CRT screens pickup by 3 pm Thursday at 781-933-2113 to schedule Friday pick up. (note: residents are not required to use Waste Management for appliances and CRT screens pick-up)

**Appliances**

(stoves, washers, dryers, etc.) \$15 each

**Freon Bearing Appliances**

(refrigerators-doors must be removed, ac, etc.) \$25 each

**TV/Computer Monitors** \$35 each

▲ **COLLECTION SCHEDULE**

Recycling containers are collected **EVERY OTHER WEEK** on regular trash collection day. Neighborhoods have been assigned white or orange weeks to help clarify when recyclables will be collected. For information concerning your trash or recycling schedule, contact the Board of Health at 781-897-5920.

**2018 YARD WASTE COLLECTION**

(on your regular trash day).

|              |               |                  |
|--------------|---------------|------------------|
| Apr. 16 - 20 | Jul. 16 - 20  | Oct. 15 - 19     |
| May 14 - 18  | Aug. 20 - 24  | Oct. 29 - Nov. 2 |
| June 18 - 22 | Sept. 17 - 21 | Nov. 12 - 16     |
|              |               | Nov. 26 - 30     |



Use yard waste bags or barrels without lids. **NO PLASTIC BAGS.** Cut branches to 3 feet in length, no larger than 2 inches in diameter, bundle & tie.

**HOLIDAY SCHEDULE**

If a collection day falls on a holiday, that day's collection and remaining collections for the week are delayed one day. **HOLIDAYS ARE CIRCLED.**

**MISSED COLLECTIONS**

If your recyclables, trash or yard waste has not been picked up, call Waste Management at 781-933-2113 within 24 hours.

**2018 BIN COLLECTION**

**WHITE WEEK**

**ORANGE WEEK**

○ OBSERVED HOLIDAYS

| JANUARY 2018 |    |    |    |    |    |    |
|--------------|----|----|----|----|----|----|
| Su           | Mo | Tu | We | Th | Fr | Sa |
| 1            | 2  | 3  | 4  | 5  | 6  |    |
| 7            | 8  | 9  | 10 | 11 | 12 | 13 |
| 14           | 15 | 16 | 17 | 18 | 19 | 20 |
| 21           | 22 | 23 | 24 | 25 | 26 | 27 |
| 28           | 29 | 30 | 31 |    |    |    |

| FEBRUARY 2018 |    |    |    |    |    |    |
|---------------|----|----|----|----|----|----|
| Su            | Mo | Tu | We | Th | Fr | Sa |
|               |    |    |    | 1  | 2  | 3  |
| 4             | 5  | 6  | 7  | 8  | 9  | 10 |
| 11            | 12 | 13 | 14 | 15 | 16 | 17 |
| 18            | 19 | 20 | 21 | 22 | 23 | 24 |
| 25            | 26 | 27 | 28 |    |    |    |

| MARCH 2018 |    |    |    |    |    |    |
|------------|----|----|----|----|----|----|
| Su         | Mo | Tu | We | Th | Fr | Sa |
|            |    |    |    | 1  | 2  | 3  |
| 4          | 5  | 6  | 7  | 8  | 9  | 10 |
| 11         | 12 | 13 | 14 | 15 | 16 | 17 |
| 18         | 19 | 20 | 21 | 22 | 23 | 24 |
| 25         | 26 | 27 | 28 | 29 | 30 | 31 |

| APRIL 2018 |    |    |    |    |    |    |
|------------|----|----|----|----|----|----|
| Su         | Mo | Tu | We | Th | Fr | Sa |
| 1          | 2  | 3  | 4  | 5  | 6  | 7  |
| 8          | 9  | 10 | 11 | 12 | 13 | 14 |
| 15         | 16 | 17 | 18 | 19 | 20 | 21 |
| 22         | 23 | 24 | 25 | 26 | 27 | 28 |
| 29         | 30 |    |    |    |    |    |

| MAY 2018 |    |    |    |    |    |    |
|----------|----|----|----|----|----|----|
| Su       | Mo | Tu | We | Th | Fr | Sa |
|          |    |    | 1  | 2  | 3  | 4  |
| 5        | 6  | 7  | 8  | 9  | 10 | 11 |
| 12       | 13 | 14 | 15 | 16 | 17 | 18 |
| 19       | 20 | 21 | 22 | 23 | 24 | 25 |
| 26       | 27 | 28 | 29 | 30 | 31 |    |

| JUNE 2018 |    |    |    |    |    |    |
|-----------|----|----|----|----|----|----|
| Su        | Mo | Tu | We | Th | Fr | Sa |
|           |    |    |    |    | 1  | 2  |
| 3         | 4  | 5  | 6  | 7  | 8  | 9  |
| 10        | 11 | 12 | 13 | 14 | 15 | 16 |
| 17        | 18 | 19 | 20 | 21 | 22 | 23 |
| 24        | 25 | 26 | 27 | 28 | 29 | 30 |

| JULY 2018 |    |    |    |    |    |    |
|-----------|----|----|----|----|----|----|
| Su        | Mo | Tu | We | Th | Fr | Sa |
| 1         | 2  | 3  | 4  | 5  | 6  | 7  |
| 8         | 9  | 10 | 11 | 12 | 13 | 14 |
| 15        | 16 | 17 | 18 | 19 | 20 | 21 |
| 22        | 23 | 24 | 25 | 26 | 27 | 28 |
| 29        | 30 | 31 |    |    |    |    |

| AUGUST 2018 |    |    |    |    |    |    |
|-------------|----|----|----|----|----|----|
| Su          | Mo | Tu | We | Th | Fr | Sa |
|             |    |    | 1  | 2  | 3  | 4  |
| 5           | 6  | 7  | 8  | 9  | 10 | 11 |
| 12          | 13 | 14 | 15 | 16 | 17 | 18 |
| 19          | 20 | 21 | 22 | 23 | 24 | 25 |
| 26          | 27 | 28 | 29 | 30 | 31 |    |

| SEPTEMBER 2018 |    |    |    |    |    |    |
|----------------|----|----|----|----|----|----|
| Su             | Mo | Tu | We | Th | Fr | Sa |
|                |    |    |    |    |    | 1  |
| 2              | 3  | 4  | 5  | 6  | 7  | 8  |
| 9              | 10 | 11 | 12 | 13 | 14 | 15 |
| 16             | 17 | 18 | 19 | 20 | 21 | 22 |
| 23             | 24 | 25 | 26 | 27 | 28 | 29 |
| 30             |    |    |    |    |    |    |

| OCTOBER 2018 |    |    |    |    |    |    |
|--------------|----|----|----|----|----|----|
| Su           | Mo | Tu | We | Th | Fr | Sa |
| 1            | 2  | 3  | 4  | 5  | 6  |    |
| 7            | 8  | 9  | 10 | 11 | 12 | 13 |
| 14           | 15 | 16 | 17 | 18 | 19 | 20 |
| 21           | 22 | 23 | 24 | 25 | 26 | 27 |
| 28           | 29 | 30 | 31 |    |    |    |

| NOVEMBER 2018 |    |    |    |    |    |    |
|---------------|----|----|----|----|----|----|
| Su            | Mo | Tu | We | Th | Fr | Sa |
|               |    |    |    | 1  | 2  | 3  |
| 4             | 5  | 6  | 7  | 8  | 9  | 10 |
| 11            | 12 | 13 | 14 | 15 | 16 | 17 |
| 18            | 19 | 20 | 21 | 22 | 23 | 24 |
| 25            | 26 | 27 | 28 | 29 | 30 |    |

| DECEMBER 2018 |    |    |    |    |    |    |
|---------------|----|----|----|----|----|----|
| Su            | Mo | Tu | We | Th | Fr | Sa |
|               |    |    |    |    |    | 1  |
| 2             | 3  | 4  | 5  | 6  | 7  | 8  |
| 9             | 10 | 11 | 12 | 13 | 14 | 15 |
| 16            | 17 | 18 | 19 | 20 | 21 | 22 |
| 23            | 24 | 25 | 26 | 27 | 28 | 29 |
| 30            | 31 |    |    |    |    |    |

Please note Tuesday January 1, 2019 will be an observed holiday for trash and recycling pickup.

# RECYCLING INFORMATION CITY OF WOBURN

Dear Woburn Resident,

Thank you for your efforts and cooperation. Participation in Woburn's curbside recycling program by all residents living in 1-3 unit homes, condominiums and townhouses will help our community divert many tons of trash from our waste stream annually for reuse in new products.

On the reverse side you will find a recycling reference chart and collection calendar for you to post in a convenient location.

### REMEMBER...

- ▶ Plastic bags are prohibited from being used for any recycling purposes.
- ▶ Rinse all containers clean.
- ▶ For recycling stickers to place on your container, please call 781-897-5920.
- ▶ Woburn encourages home composting of yard waste.
- ▶ No construction debris. (doors, windows, sheetrock, 2x4s, etc.)

### ITEMS PERMITTED IN REGULAR TRASH:

- ▶ Regular household trash
- ▶ Carpet (cut to 3', rolled and tied)
- ▶ Only one room's worth of carpet allowed each week.
- ▶ Bulk Item (i.e. furniture) - one allowed per week

**Household hazardous waste CANNOT be put in with trash.**  
**Example: Liquid Paint, Paint Thinners, Pool Chemicals, Wood Stains, Varnishes, etc.**

Call the Woburn Board of Health for disposal instructions, 781-897-5920 or visit the Board of Health Website at [www.cityofwoburn.com](http://www.cityofwoburn.com) under public safety.



Woburn Board of Health  
 10 Common Street  
 Woburn, MA 01801  
 781-897-5920

Presorted Standard  
 US POSTAGE  
**PAID**  
 BILLERICA, MA  
 Permit #3

2018

Please Keep  
 for Reference

## Trash & Recycling Calendar "2018"

### ADDITIONAL RECYCLING INFORMATION



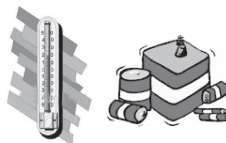
#### RESIDENTIAL WASTE OIL

**Where:** Murphy's Waste Oil  
 252 Salem Street  
 Woburn, MA 01801  
**Time:** 1st Saturday of the month  
 8 a.m. to 12 noon (except when holiday falls on a weekend.)  
 Accept waste oil, oil filter, and anti-freeze



#### CAR TIRES/BATTERIES

**Where:** City Hall Parking lot  
**Time:** 3rd Saturday of March, June and September.  
 8 a.m. to 12 noon  
 Tires on or off rims \$1.00 ea.  
 Automotive batteries \$1.00 ea.  
 Service provided by Holland Used Auto Parts.



#### MERCURY BEARING WASTES

**Where:** City Hall Parking lot  
**Time:** 3rd Sat. of March, June and Sept. 8 a.m. to 12 noon  
 fluorescent lighting, thermometers, thermostats, and button batteries.  
 Alkaline batteries can go out with regular trash. All recyclable batteries are accepted at BatteriesPlus at 173A Cambridge Rd.



#### PROPANE TANKS

**Where:** Xpress Fuel  
 505 Main Street  
 Woburn, MA 01801  
**Time:** M-F: 6:00 a.m. - 10:00 p.m.  
 Sat.: 7:00 a.m. - 10:00 p.m.  
 Sun: 8:00 a.m. - 8:00 p.m.  
 \$5.00 per tank

#### Illegal Dumping

If you see any illegal dumping or other environmental hazards occurring in your neighborhood, **please call your local Board of Health** or the DEP Environmental Strike Force at 617-556-1000.

#### REMEMBER, YOU HAVEN'T TRULY RECYCLED UNTIL...

you buy products made from materials you place at the curbside or drop-off. For more information on recycling in the City of Woburn call: 781-897-5920 or go to our website @ [www.cityofwoburn.com](http://www.cityofwoburn.com)